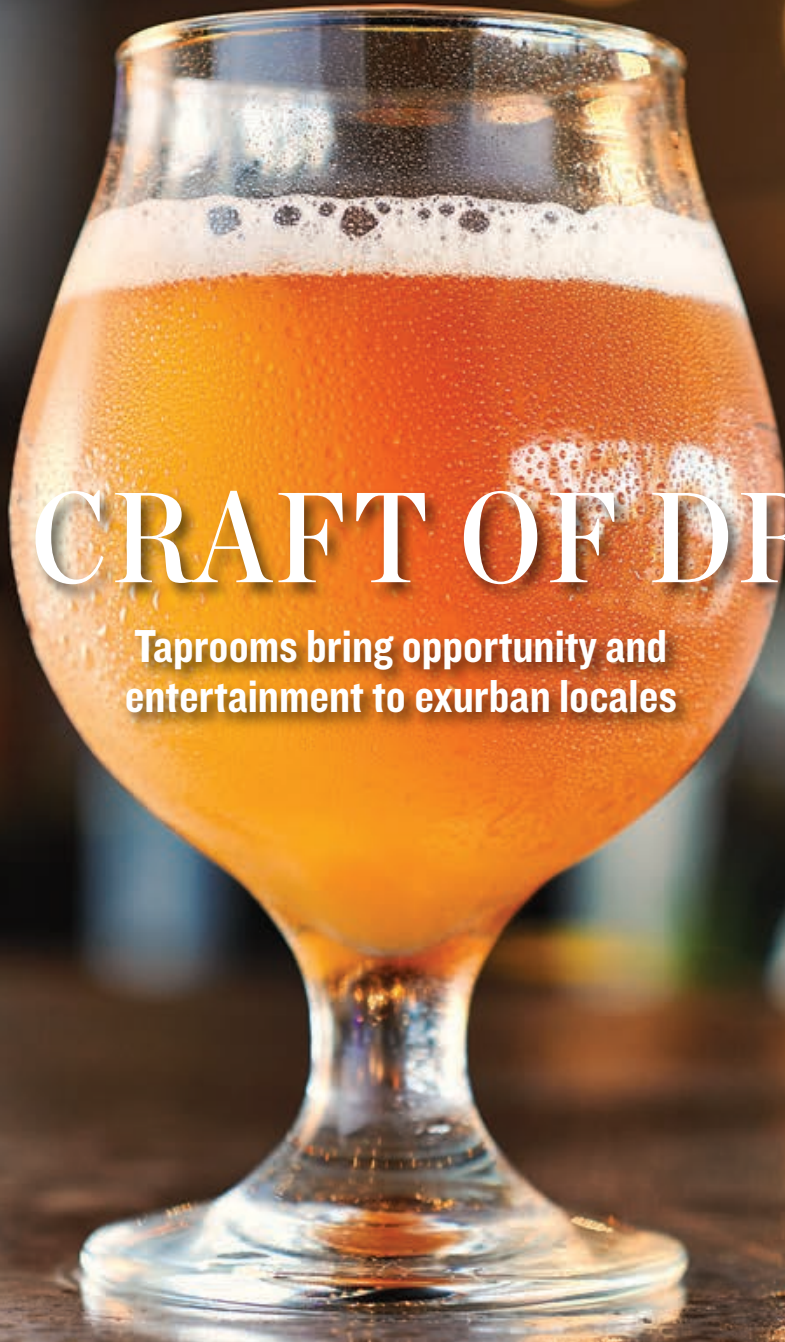


TEXAS CO-OP POWER

THE CRAFT OF DRAFT

Taprooms bring opportunity and
entertainment to exurban locales





NEWEST FLEET ALONG THE MISSISSIPPI RIVER

BRAND NEW FOR 2020

- NEW ENGLAND
- SOUTHEAST
- MISSISSIPPI RIVER
- PACIFIC NORTHWEST
- ALASKA

With the introduction of our Modern Riverboat Series, American Cruise Lines is elevating the standard for U.S. riverboat cruising. Aboard these brand new ships that feature modern design, spacious staterooms with private balconies, and a grand multi-story atrium, experience the future of U.S. riverboat cruising.

Small Ship Cruising Done Perfectly.®



LARGEST STATEROOMS

AWARD-WINNING EXCURSIONS

GLASS ATRIUM



Call today for your **FREE** Cruise Guide
1-800-459-2596
 AmericanCruiseLines.com





Liz Cox pours a Mexican lager at Bandera Ale Project.

FEATURES

8 Texas Feels a Draft Craft breweries bring entertainment and economic opportunity to exurban communities.

Story by Melissa Gaskill | Photos by Dave Shafer

12 Gordon's Gold Architect James Riely Gordon flourished during the golden age of Texas courthouses.

By Sheryl Smith-Rodgers

FAVORITES

5 Letters

6 Currents

18 **Co-op News**

Get the latest information plus energy and safety tips from your cooperative.

29 **Texas History**

Ghost Dogs of Orozimbo
By Martha Deeringer

31 **Recipes**

New Year's Resolution

35 **Focus on Texas**

Photo Contest: Fences

36 **Around Texas**

List of Local Events

38 **Hit the Road**

Must See Sequel
By Chet Garner

ONLINE

TexasCoopPower.com

Find these stories online if they don't appear in your edition of the magazine.

Texas USA

One Corner of the Square
By Clayton Maxwell

Observations

Four Walls and the Truth
By Rhonda Reinhart

NEXT MONTH

A Tale of Texas Crawfish

Tasty crustaceans create a feasting frenzy every spring.



29

BANDERA ALE PROJECT: DAVE SHAFER. CRAWFISH: BONCHAN | SHUTTERSTOCK.COM



31



35



38

ON THE COVER Nearly 300 craft breweries operate in Texas, representing a \$5.3 billion industry. Photo by Dave Shafer

TEXAS ELECTRIC COOPERATIVES BOARD OF DIRECTORS: Alan Lesley, Chair, Comanche; Robert Loth III, Vice Chair, Fredericksburg; Gary Raybon, Secretary-Treasurer, El Campo; Mark Boyd, Douglassville; Greg Henley, Tahoka; Billy Jones, Corsicana; David McGinnis, Van Alstyne • **PRESIDENT/CEO:** Mike Williams, Austin • **COMMUNICATIONS & MEMBER SERVICES COMMITTEE:** Marty Haught, Burlleson; Bill Hetherington, Bandera; Ron Hughes, Sinton; Boyd McCamish, Littlefield; Mark McClain, Roby; John Ed Shinpaugh, Bonham; Robert Walker, Gilmer; Brandon Young, McGregor • **MAGAZINE STAFF:** Martin Bevins, Vice President, Communications & Member Services; Charles J. Lohrmann, Editor; Tom Widlowski, Associate Editor; Karen Nejtek, Production Manager; Andy Doughty, Creative Manager; Elaine Sproull, Advertising Manager; Chris Burrows, Senior Communications Specialist; Grace Fultz, Print Production Specialist; Travis Hill, Communications Specialist; Qasim K. Johnson, Administrative Assistant; Jessica Ridge, Communications Specialist; Chris Salazar, Digital Field Editor; Ally Schauer, Intern; Jane Sharpe, Senior Designer; Shannon Oelrich, Food Editor and Proofreader

ADVANCED DIGITAL HEARING AID TECHNOLOGY

**BUY 1
GET 1 FREE** Reg: ~~\$399.98~~
Only \$199⁹⁹
Each When You Buy a Pair – **LIMITED TIME ONLY!**

How can a digital hearing aid that costs only \$199⁹⁹ be every bit as good as one that sells for \$2,400 or more?

The answer: Although tremendous strides have been made in Advanced Digital Hearing Aid Technology, those cost reductions have not been passed on to you. Until now...

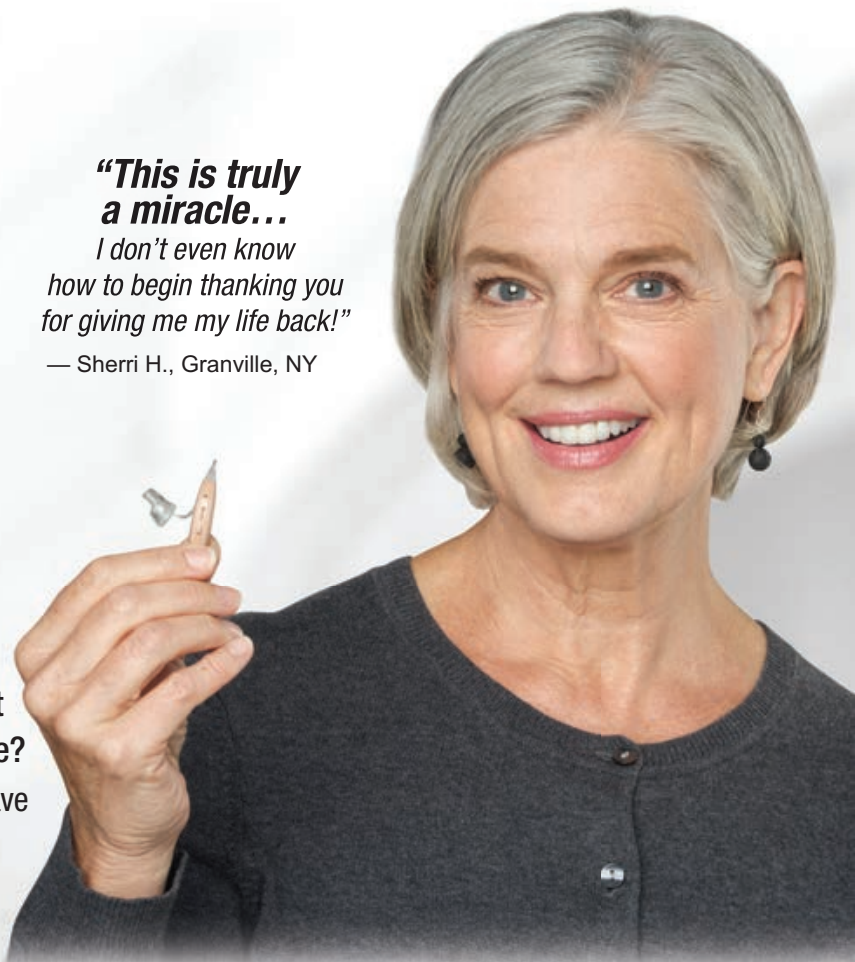
MDHearingAid® uses the same kind of Advanced Digital Hearing Aid Technology incorporated into hearing aids that cost thousands more at a small fraction of the price.

Over 350,000 satisfied **MDHearingAid** customers agree: High-quality, digital FDA-registered hearing aids don't have to cost a fortune. The fact is, you don't need to spend thousands for a digital hearing aid. **MDHearingAid** is a medical-grade digital hearing aid offering sophistication and high performance, and works right out of the box with no time-consuming "adjustment" appointments. You can contact a licensed hearing specialist conveniently online or by phone — even after your purchase at no cost. No other company provides such extensive support. Now that you know...why pay more?

MDHearingAid® 
DOCTOR DESIGNED | AUDIOLOGIST TESTED | FDA REGISTERED

*"This is truly a miracle...
I don't even know how to begin thanking you for giving me my life back!"*

— Sherri H., Granville, NY



Can a Hearing Aid Delay or Prevent Alzheimer's and Dementia?

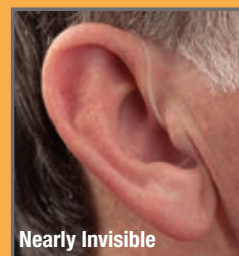
A study by the National Institute on Aging suggests older individuals with hearing loss are significantly more likely to develop Alzheimer's and dementia over time than those who retain their hearing. They suggest that an intervention — such as a hearing aid — could delay or prevent this by improving hearing!

45-DAY RISK-FREE TRIAL!

If you are not completely satisfied with your MDHearingAids, return them within 45 days for a FULL REFUND!

For the Lowest Price Call
1-800-966-5506

www.MDBOGO.com



Nearly Invisible

BATTERIES INCLUDED!

Use Code **JV31**
and get **FREE Batteries for 1 Year**
Plus FREE Shipping

Proudly assembled in America!



Not 10 and 2?

Great nostalgic writing [*Ranch Hands on the Wheel*, October 2019]. I can go further back when there were NO seatbelts and hands on steering wheel position was 3 and 9.

VIVIAN WILLIS | VIA FACEBOOK

Honor Our Vets

Wreaths Across America [November 2018] prompted me to donate wreaths for this nationwide organization. This is a fantastic opportunity to honor our vets, and I will be donating again this year. I am hoping the follow-up article [*Leader of Kind Strangers*, November 2019] about Ellen Fuller, co-chair of this state-wide effort in Texas, will encourage more people to donate.

JOYCE HISER | CRANDALL TRINITY VALLEY EC

Stagecoach Secrets

I was once afforded access to areas off-limits to the general public, including the rooms and attic of the original Stagecoach Inn building [*Stopping by the Stagecoach*, November 2019]. That was neat enough, but the real treat was a hidden cave that was originally used for vegetable storage back in the 1800s. It was where Sam Bass hid out before leaving the next day for Round Rock, where he met his demise.

I treated myself to a scrumptious meal of fried catfish, which included the wonderful cornbread fingers that the inn is still famous for serving. Looks like a trip down Interstate 35 is in order.

BILL PEAKE | FRISCO COSERV

Fair Is Fair

Not only did my dad teach me how to drive a standard pickup but also to change a flat tire before I took driver's ed [*Ranch Hands on the Wheel*, October 2019]. But when the high school instructor said only us girls had to change one, I stated I knew how and felt the boys should also. I wasn't giving in (it was a requisite to take the written test), so in the end all the boys had to also. Even my cousin was mad at me, but I felt fair was fair.

PAMELA JONES MAASS | VIA FACEBOOK



Banner Day for Co-ops

Last year, I lost my husband, Bill Casey, and have been learning how to do so many things on my own. We had a strong windstorm last spring, and my flagpole got dislodged from its concrete mooring. Pedernales EC decided to take this on as a public service, and on October 8, workers came out in their trucks and reset and welded the flagpole back into position.

Before they left, we put up the Texas flag, and it was won-

derful to see it flying in front of the house again.

KAREN CASEY | CYPRESS MILL PEDERNALES EC

Value of VFDs

My wife and I own our home and a 5-acre horse farm in rural Collin County. We also own a small cabin in Arkansas. Both houses are served by electric co-ops. Fire protection for both dwellings is provided by volunteer fire departments [*Putting Others First*, October 2019].

Each property owner in Arkansas served by a VFD is a member of the VFD and is assessed dues annually by state law. Payment of the dues is not mandatory, but if not paid by the member and a fire occurs, the member will be billed for the cost of responding to the fire.

I have contacted our state

representative about having a similar dues requirement in Texas for VFDs but have not seen or heard of any action being taken on this matter.

JAMES TRUEMPER | FARMERSVILLE FANNIN COUNTY EC

GET MORE TCP AT TexasCoopPower.com

Sign up for our e-newsletter for monthly updates, prize drawings and more!

We want to hear from you!

ONLINE: TexasCoopPower.com/share

EMAIL: letters@TexasCoopPower.com

MAIL: Editor, Texas Co-op Power, 1122 Colorado St., 24th Floor, Austin, TX 78701

Please include your town and electric co-op. Letters may be edited for clarity and length.

   Texas Co-op Power

TEXAS CO-OP POWER VOLUME 76, NUMBER 7 (USPS 540-560). *Texas Co-op Power* is published monthly by Texas Electric Cooperatives (TEC). Periodical postage paid at Austin, TX, and at additional offices. TEC is the statewide association representing 75 electric cooperatives. *Texas Co-op Power's* website is TexasCoopPower.com. Call (512) 454-0311 or email editor@TexasCoopPower.com. **SUBSCRIPTION PRICE** is \$4.20 per year for individual members of subscribing cooperatives and is paid from equity accruing to the member. If you are not a member of a subscribing cooperative, you can purchase an annual subscription at the nonmember rate of \$7.50. Individual copies and back issues are available for \$3 each. **POSTMASTER:** Send address changes to *Texas Co-op Power* (USPS 540-560), 1122 Colorado St., 24th Floor, Austin, TX 78701. Please enclose label from this copy of *Texas Co-op Power* showing old address and key numbers. **ADVERTISING:** Advertisers interested in buying display ad space in *Texas Co-op Power* and/or in our 30 sister publications in other states, contact Elaine Sproull at (512) 486-6251. Advertisements in *Texas Co-op Power* are paid solicitations. The publisher neither endorses nor guarantees in any manner any product or company included in this publication. Product satisfaction and delivery responsibility lie solely with the advertiser.

© Copyright 2020 Texas Electric Cooperatives, Inc. Reproduction of this issue or any portion of it is expressly prohibited without written permission. Willie Wiredhand © Copyright 2020 National Rural Electric Cooperative Association.



Texas Electric Cooperatives
A Touchstone Energy® Cooperative

Dinner With the Arts

Since 1980, the Greater New Braunfels Arts Council has supported artists in New Braunfels and Comal County with events like last month's Caroling on the Plaza and annual Cinco de Mayo presentations in area schools. Another of the organization's signature events is Dinner With the Arts, which in recent years has become a fundraiser.

DINNER WITH THE ARTS, on **JANUARY 18** at the McKenna Events Center in **NEW BRAUNFELS**, will include a live band, visual arts, interactive exhibits and opportunities for patrons to sustain the organization through silent auctions, raffles and art sales.

Lisa Heymann, president of the council, says as many as 400 people attend the dinner each year in support of programs such as the Fall Into Art Festival and art and poetry contests.

INFO ▶ (830) 358-3480, gnbac.org



WEB EXTRAS
▶ Find more happenings online.

“Courage, after all, is not being unafraid but doing what needs to be done in spite of fear.”

— **JAMES L. FARMER JR.**, civil rights leader born January 12, 1920, in Marshall

2020 VISION



2020 doesn't look exactly like some people predicted it would many years ago.

Prediction: In 1967, *The Futurist*, then a newsletter, said humans would breed apes to be chauffeurs and perform other household chores.

Reality: Apes are struggling just to be apes. Close to 60% of the world's 504 primate species are threatened with extinction, and 75% of those species are in severe population decline, according to earthday.org.

Prediction: In 2020, humans arrive on Mars. So said *Wired* magazine in 1997.

Reality: NASA says it hopes to send astronauts to Mars, which is an average of 140 million miles from Earth, in the 2030s.

Prediction: “There will be no C, X, or Q in our everyday alphabet. They will be abandoned because unnecessary.” That's what engineer John Elfreth Watkins Jr. wrote in *Ladies' Home Journal* in 1900.

Reality: An exciting idea but quite incorrect.



POWER OF OUR PEOPLE

A Close-Knit Couple

ALTHEA AND JOHN CONRADO, Pedernales Electric Cooperative members since 1975, are in their seventh decade of marriage, have seven children and have together explored all seven continents. But Althea’s luck seemed less certain in 1944, when the then 11-year-old raised the eyebrows and ire of a Red Cross worker.

The relief agency was at that time distributing yarn to volunteers to knit specialized gloves—with an open trigger finger—for Allied machine gunners overseas. Althea, who began knitting at age 5, wanted to contribute. But the aid worker she encountered pronounced her too young, to Althea’s deep disappointment. A phone call from her mother to the agency sorted it, and she returned. “I can still see her face,” Althea said. “She was so mad. And I came home with two big bags full of yarn!” She knitted the gloves, turned them in, then got some more yarn and kept knitting.

Though the product of Althea’s knitting has today changed to blankets for Austin hospice patients, her pace hasn’t slackened. She averages 1½ to two blankets

per week, each taking about 40 hours to make. Again last year, Althea was recognized by Travis County with a Spirit of Service Award, which honors volunteers for 2,000 hours of work—though she racks up more than 3,000 hours knitting annually.

John marvels at his wife’s prolific output. “Some days it seems like they crank out of there faster, she’s doing pink and next thing you know it’s purple. What happened to the pink? It’s purple!”

POWER OF OUR PEOPLE recognizes co-op members who improve their community’s quality of life. Nominate someone by emailing people@texascooppower.com.

FINISH THIS SENTENCE

I knew I was grown up when . . .

We think it will be fun to show a little bit of our readers’ personalities by asking you to finish a sentence that we start. As we collect your thoughts, we’ll share them in the magazine and online.

We tried this ourselves, and here’s what the writers and editors on our staff came up with:

Chris Burrows: ...I got socks for Christmas and was glad for it.

Travis Hill: ...my student loan servicer told me I’d be 60 before I paid off my debt.

Jessica Ridge: ...I couldn’t move away from my college apartment without taking the heavily pregnant community cat with me.

Tom Widlowski: ...I bought my parents dinner for the first time.



► **Now it’s your turn.**

How would you finish that sentence? Post your responses on the *Texas Co-op Power* Facebook page or email them to letters@texas-ec.org. Please include your city and co-op. We’ll share what you send us.

MILESTONE BIRTHDAY

Everybody Look What’s Going Down

For what it’s worth, musician Stephen Stills of Buffalo Springfield and Crosby, Stills & Nash turns 75 this month. He wrote three hit songs decades ago that can still get stuck in your head today: *For What It’s Worth*, *Suite: Judy Blue Eyes* and *Love the One You’re With*.

He was born January 3, 1945, in Dallas.



Texas
= FEELS A =
Draft

STORY BY MELISSA GASKILL
PHOTOS BY DAVE SHAFER

Craft Breweries

BRING ENTERTAINMENT AND ECONOMIC
OPPORTUNITY TO COMMUNITIES

On a sunny fall afternoon, large overhead fans supplement a light breeze blowing through open doors. Several couples perch at a long bar, dogs sprawled on the concrete floor nearby. People group around tables, deep into spirited board games. Out the back door, others dig into plates of barbecue at shaded picnic tables.

Bandera Ale Project is one of a new breed of community gathering spots. All around Texas, craft breweries have become destinations where folks bring the family and the dog, and play games or listen to music or comedy acts. The adults taste new flavors and types of beers, observe the brewing process and even meet the brewmaster.

Nearly 300 craft breweries now operate in Texas, representing a \$5.3 billion slice of the state's economy. Texas produces more craft beer than all but seven other states but ranks 46th in breweries per capita.

Josh Hare of Hops & Grain Brewing in Austin and chairman of the Texas Craft Brewers Guild board says several challenges have hampered the Texas industry. "When we opened Hops & Grain in 2011, it was not legal to operate a tasting room," he says. "The beer you poured had to be free." Brewers got around that by selling the glasses into which they poured beer. Then legislation passed in 2013 allowed brewers to sell beer on-site.

"From 2013 forward, we went from a dozen or so breweries to more than 70 just in Austin," Hare says.

The 2019 Legislature allowed manufacturing breweries to sell beer to go. Before that, Texas had been the only state that prohibited sales of six-packs or growlers (reusable bottles) for customers to take home. Other limits remain, though, in-

Opposite: John Oliver, brewmaster at Bandera Ale Project. Above: After a day of preparing their hunting camp, Jezire and Brent Akin treat themselves to Bandera Ale Project beers.



cluding how much product a brewery can distribute, Hare explains.

The Texas brewing industry comprises three tiers—manufacturing, distribution and retail—with specific rules for each. A manufacturing brewery that produces fewer than 225,000 barrels annually can operate a tasting room and sell on-site only. A brewpub, considered retail, can make and sell beer for

consumption on-site or off-site but only up to 10,000 barrels per year. Hops & Grain is about to reach that size, Hare says. "Do we give up the ability to sell beer to go in order to make more?"

Meanwhile, beer tourism has grown across the state, Hare points out, and that growth means more manufacturing jobs. "This is a manufacturing industry that employs a lot of folks," he says. "The retail components of craft breweries, from live entertainment to food trucks and tour groups, create additional jobs."

Bandera Ale Project, a member of Bandera Electric Cooperative, stages music every Saturday and prefers to hire local artists, says co-owner and brewmaster John Oliver. "We have music, comedy, open mic, karaoke. And we're family friendly," he says. "We cultivate that atmosphere; we're not your typical bar."

The brewery, about 50 miles northwest of San Antonio, offers free Wi-Fi, too, using Bandera EC's high-speed fiber internet. Communication specialist Samantha Gleason says BEC Fiber launched about the time the brewery opened. "Bandera Brewery added more of a community space to the area," she says. "And they contribute to support of local businesses, instead of buying from a bar that gets its product from outside the community."

Some craft breweries also play a role in revitalization efforts by restoring old, abandoned buildings. In downtown Lockhart, Caracara Brewing Company occupies a formerly empty historic building. In the North Texas town of Nocona, Nocona Beer & Brewery took over a former boot factory.



Craft brewing could bring jobs to the agriculture industry in Texas as well. Four basic ingredients go into making beer: hops, barley, water and yeast. Craft brewers use more hops than mass-produced beers, according to Neil Reid, the “beer professor” at the University of Toledo. For example, an imperial India pale ale style of beer uses 4 pounds of hops per keg, while a traditional pilsner uses less than half a pound. Small brewers also use hops to create unique flavors, while mass-produced beers focus on hop varieties that provide consistency of taste.

Even though most barley comes from outside Texas, Quentin Hart of the National Agricultural Statistics Service says that between 2012 and 2017, the number of acres of barley harvested in Texas increased nearly 93%.

WEB EXTRAS

► Read this story on our website to see a map of small-town craft breweries in Texas.

Barley used in beer is malted, which involves steeping the grain in water under controlled conditions, allowing it to sprout, then drying it.

Cory Artho is co-owner of Maverick Malt House, 20 miles west of Amarillo, one of several malting houses operating in the state. Price is his biggest challenge. Malt from Canada, which produces millions of tons, sells for 40 or 50 cents a pound. “We have a 5-ton

Above: The old Nocona Boots factory is now home to Nocona Beer & Brewery. Right: Jody Jones serves conviviality by the pint at Nocona.





*“We have music, comedy,
open mic, karaoke.
And we’re family-friendly.”*

**WE CULTIVATE THAT ATMOSPHERE;
WE’RE NOT YOUR TYPICAL BAR.”**

machine, and if we ran it year-round, we might make 400,000 pounds,” he says. That smaller volume means Maverick must charge 80 cents a pound.

Still, the idea of local ingredients appeals to Texas brewers. Southerleigh Fine Food and Brewery in San Antonio makes the only all-Texas beer, Artho says. Texas Born and Bred, a pale ale, contains his barley, hops from Hank’s Hops in San Antonio, which grows the flowers hydroponically in a greenhouse, and yeast from Texas Yeast Lab in New Braunfels.

Beyond hops and barley, going local becomes easier. Oliver says that for its honey brown ale, Bandera Ale Project uses Doyle’s Honey, produced by Kent Doyle, a member of Medina Electric Cooperative. Its coffee porter uses coffee beans from Texas.

Jim and Carly Baroffio opened the Bandera brewery in November 2017, and Oliver joined shortly thereafter. “This location was the perfect place to put a brewery because we had access to the property behind for a beer garden,” Oliver says. “You couldn’t find a property big enough for the garden in San Antonio or even on Main Street in Bandera.”

Bandera Ale Project offers barbecue from Busbee’s Bar-B-Que on Main Street. “We wanted someone from Bandera, to make it like a small second location,” Oliver says. “They cook all the food at the main location and bring it here.”

All the fun aside, craft brewing is, bottom line, about the beer. Texas beers snapped up 29—including 11 gold—of the more than 400 medals awarded at the 2019 U.S. Open Beer Championship, where Fredericksburg’s Altstadt Brewery ranked as one of the top 10 breweries overall.

Bandera Ale Project attended its first competition, the Great American Beer Festival, in Denver in October. “Back when we started, we had just two beers on tap, a blonde ale and a honey brown ale, and sometimes we ran out of one because we only had one fermenter,” Oliver says. “After a few months, we got two more fermenters and had four beers on tap, then eight. We bought two more and now have 14 beers on tap. It’s been a learning process. People still come by just for those first two beers, though.”

That hard work has made beer a good reason for people to visit craft brewing establishments across the state. But certainly not the only one.

See more of Melissa Gaskill’s work at melissagaskill.blogspot.com.

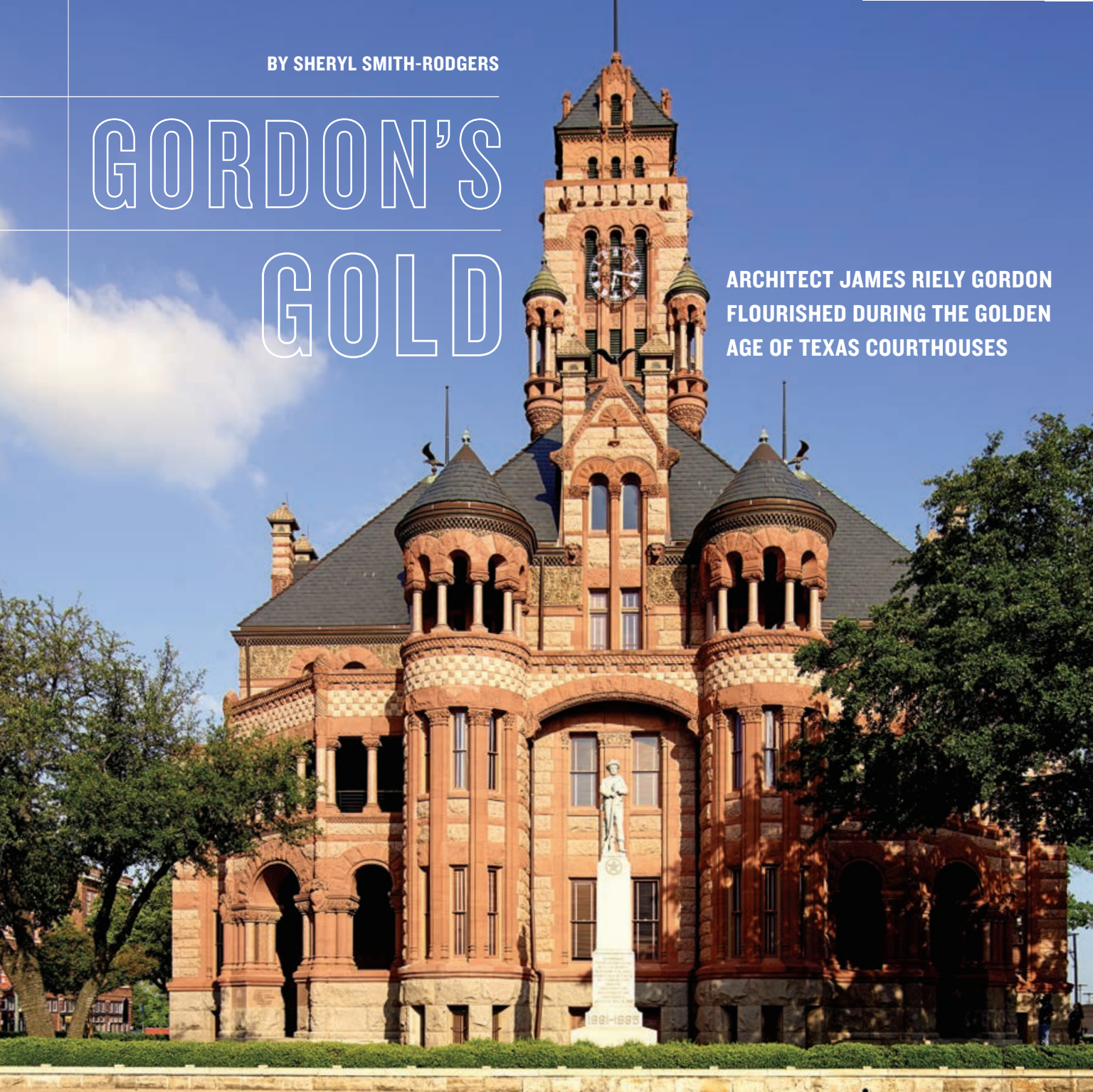
From top: Bandera Ale Project’s beer garden. Dave Young, Nocona’s head brewer, keeps a watchful eye on his 6,100-gallon tanks. Cans await beer at Fredonia Brewery in Nacogdoches.



BY SHERYL SMITH-RODGERS

GORDON'S GOLD

ARCHITECT JAMES RIELY GORDON
FLOURISHED DURING THE GOLDEN
AGE OF TEXAS COURTHOUSES



Cramped and outdated, the 1892 Victoria County Courthouse faced demolition in 1961 to make way for a new building in downtown Victoria. When historical preservationists got wind of the plan, they rallied support and presented a 13-foot-long petition to county commissioners. Unfurling the scroll, they read aloud the names of 661 county residents who wanted the courthouse's exterior to remain intact. Following this citizens' directive, commissioners voted to make no outside changes to the three-story edifice, adorned with turrets, arched windows and a clock tower.

Today, the former Victoria County Courthouse houses county offices and stands among 12 surviving Texas courthouses designed

and built by James Riely Gordon. From 1889 to 1902, the prolific architect designed 18 "temples of justice"—plus commercial, religious, residential and other civic buildings—across the state.

Ranked among Gordon's outstanding work is the Ellis County Courthouse, heralded as a "masterpiece" by author James Michener. In his 1985 historical novel *Texas*, Michener likens the pink-and-gray granite building in Waxahachie to a "... fairy-tale palace 10 stories high, replete with battlements and turrets and spires and soaring clock towers and miniature castles high in the air. It was a bejeweled treasure,

Clockwise from above: The Ellis County Courthouse in Waxahachie and exterior details; the Gonzales County Courthouse in Gonzales; architect James Riely Gordon.

ELLIS AND GONZALES COURTHOUSES: LIBRARY OF CONGRESS



ASIDE FROM THEIR RESPLENDENT FACADES, GORDON'S COURTHOUSES HAD ANOTHER MAJOR SELLING POINT: IN BROILING SUMMER MONTHS, THEY FELT COOLER INSIDE.



structures that he adapted to the specific needs of anyone he could interest,” writes Chris Meister in *James Riely Gordon: His Courthouses and Other Public Architecture*. “A study of the architect’s known work finds most of his early structures in communities along rail lines connecting with San Antonio.”

Gordon’s start as an architect couldn’t have had better timing. In 1881, the 17th Texas Legislature passed a bill that allowed counties to borrow funds to build public buildings. The earliest courthouses in Texas were tents, dugouts or simple log structures, according to *The Courthouses of Texas*, by Mavis P. Kelsey Sr. and Donald H. Dyal. Because these primitive affairs were often unsafe, the 1881 bill empowered county commissioners to build spacious, fireproof buildings that inspired awe and attracted commerce.

The golden age of grandiose Texas courthouses had begun.

In those days, counties often staged competitions to attract designs for courthouse projects. In 1888, Gordon entered an Aransas County contest in Rockport. His exotic Moorish concept, graced with horseshoe arches and onion domes, stood out among plans submitted by other architects, including the esteemed Alfred Giles and Otto Kramer. Gordon’s first courthouse served citizens for 65 years before it was torn down.

For the next decade, Gordon embraced an architectural trend called Richardsonian Romanesque. The massive, masonry style—developed by Boston architect Henry Hobson Richardson—features short columns; wide, rounded arches; conical or pyramidal towers; and sculpted ornaments. Gordon melded those elements to create customized courthouses for Fayette, Bexar, Erath and Victoria counties.

Gordon’s professional reputation soared in 1893, when his Texas State Building wowed visitors at the World’s Columbian Exposition in Chicago. One newspaper writer proclaimed the building as “one of the most attractive at the Fair,” and it would

yet it was also a sturdy, massive court of judgments, one of the finest buildings in Texas.”

Born August 2, 1863, in Winchester, Virginia, Gordon moved with his mother and civil engineer father to San Antonio in the early 1870s. He joined the civil engineer corps of the International-Great Northern Railroad at age 14. In 1881, Gordon worked under architect William K. Dobson and then as a draftsman with J.N. Preston & Son. In late 1884, he opened his own San Antonio office with established architect Frederick Shelton. In the coming years, Gordon would go in and out of partnerships and would also run an office in Dallas.

Gordon traveled the state by train and buggy in search of clients. “On these trips, he carried generic plans for a variety of



WEB EXTRAS

► Read this story on our website to see vintage postcards of Gordon's Texas courthouses.

become the most widely publicized design of Gordon's lifetime. By fall 1896, the fair's buildings had been razed or burned.

Aside from their resplendent facades, Gordon's courthouses had another major selling point: In broiling summer months, they felt cooler inside. To maximize comfort, the architect created a cross-shaped layout with a center atrium, a combined shaft and tower, and corner entrance porches. The plan, which Gordon copyrighted and improved with subsequent projects, worked like a chimney, drawing cool air from the porches while venting hot air upward through the tower. Eleven courthouses followed Gordon's "Signature Plan," according to a list in Meister's book.

After the 1893 fair, Gordon continued his work in Texas, designing 13 more courthouses. Brazoria (demolished), Hopkins, Gon-

Clockwise from left: The McLennan County Courthouse dome in Waco and window detail; an archive photo of the Bexar County Courthouse in San Antonio.

zales, San Patricio (demolished), Ellis, Van Zandt (demolished), Wise, Comal and Lee reflect his Richardsonian Romanesque style. With Harrison (now a museum), McLennan and Angelina (demolished), Gordon transitioned to the Beau-

Arts style that uses grand entrances and towering pillars. A low budget kept Callahan (demolished) sparse in architectural detail.

In June 1902, Gordon moved his practice and family to New York. Shortly before his 1937 death, he designed a building for the 1939 New York World's Fair. The honor ended the 53-year career of the architect who signed his work J. Riely Gordon and got his start in Texas.

Sheryl Smith-Rodgers of Blanco blogs about her gardening adventures at sherylsmithroddgers.blogspot.com.

NEW YEAR **NEW WINDOWS**

MAKE WINDOW REPLACEMENT YOUR NEW YEAR'S RESOLUTION

60% OFF LABOR

plus

\$100 OFF
EACH WINDOW*

and

0

**MONEY DOWN
PAYMENTS
INTEREST**

For 12 Months*

Please ask about our other amazing finance options.

Minimum purchase required.

THIS IS YOUR LAST CHANCE TO LOCK IN LAST YEAR'S PRICES!

Schedule your free in-home consultation NOW! We'll provide you with an exact, down-to-the-penny price that's good for the entire year.

HURRY! SALE ENDS 1/31

CALL NOW FOR A FREE CONSULTATION.

**Renewal
by Andersen.**
WINDOW REPLACEMENT



an Andersen Company

CALL (469) 606-5229

rbaofdfw.com

**GET AN ADDITIONAL
DISCOUNT**

When You Replace 10+ Windows

*Offer not available in all areas and ends 1/31/20 and appointment must occur within 10 days of the initial contact. Discount applies to minimum required purchase. \$0 payments and deferred interest for 12 months available to well qualified buyers on approved credit only. Financing is provided by federally insured, federal and state chartered financial institutions without regard to race, color, religion, national origin, sex or familial status. Any finance terms advertised are estimates only, and all financing is provided by third-party lenders unaffiliated with Renewal by Andersen retailers, under terms and conditions arranged directly between the customer and such lender, all subject to credit requirements. "Renewal by Andersen" and all other marks where denoted are marks of Andersen Corporation. ©2020 Andersen Corporation. All rights reserved.





3DAYBLINDS®
YOU'LL LOVE THE TREATMENT

CUSTOM BLINDS, SHADES,
SHUTTERS & DRAPERY



New Year - New Look! Celebrate SAVINGS in Style!



Ask About The Benefits Of Layering With Drapery

HURRY!
Limited Time Offer!

BUY 1 GET 1
50% OFF*

on Custom Blinds,
Shades & Drapery

Cellular Shades

Woven Woods

Shutters

Call To Schedule Your **FREE**
In-Home Design Consultation

1-877-892-4537

or visit www.3DayOffer835.com



WE DESIGN, WE MEASURE, WE INSTALL, YOU RELAX!®

*Offer valid on 3 Day Blinds brand products only, excluding shutters and special orders. Buy 1 qualifying window covering and receive the 2nd qualifying window covering of equal or lesser value at 50% off! Offer excludes installation, sales tax, shipping and handling. Not valid on previous purchases or with any other offer or discount. Offer Code **BGXB**. Expires **3/31/20**. 3 Day Blinds LLC has the following licenses: AZ ROC 321056, CA #1005986, CT HIC.0644950, NJ #13VH09390200, OR #209181, PA #PA107656, WA #3DAYBDB842KS, Nassau County, NY Home Improvement License H01073101, Rockland County, NY #H-12401-34-00-00. © 2020 3 Day Blinds LLC.



Understanding the EnergyGuide Label

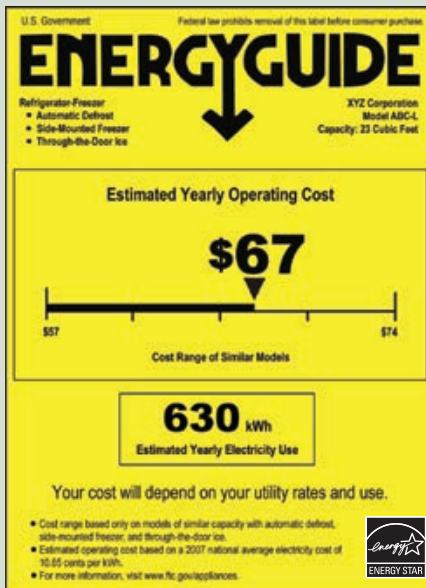


The **ENERGYGUIDE** label is a great tool that helps consumers compare the energy use and costs of new appliances. Use the sample below to better understand how to use the information found on the label.

Lists key features of the appliance and the similar models that make up the cost range below.

The cost range helps you compare the energy use of different models by showing you the range of operating costs for models with similar features.

An estimate of how much electricity the appliance uses in a year based on typical use. Multiply this by your local electricity rate on your utility bill to better judge what your actual operating cost might be.



The make, model and size tell you exactly what product this label describes.

What you might pay to run the appliance for one year, based on its electricity use and the national average cost of energy. The cost appears on labels for all models and brands so you can compare energy use.

If you see the ENERGY STAR logo, it means the product is better for the environment because it uses less electricity than standard models.

Source: Federal Trade Commission

cient than the least efficient unit, while washing machines must be 37% more efficient.

When you're shopping for appliances, consider items as having two price tags. The first one covers the purchase price—think of it as a down payment. The second price tag is the cost of operating the appliance during its lifetime. You'll be paying the second price every month with your utility bill for the next 10–20 years, depending on the appliance. Refrigerators last an average of 12 years; clothes washers last about 11 years; and room air conditioners last about nine years.

When shopping, consider labels and features that can help ensure that you purchase appliances with a low operating cost.

The EnergyGuide label is a great tool that helps consumers compare the energy use and costs of new appliances. The list below details information the label includes and offers tips on interpreting it.

- ▶ Key features of the appliance and the similar models that make up the cost range below the top section of the label.

- ▶ The cost range helps you compare the energy use of different models by showing you the range of operating costs for models with similar features.

- ▶ An estimate of how much electricity the appliance uses in a year based on typical use. Multiply this by the electricity rate on your utility bill to better judge what your actual operating cost might be.

- ▶ The make, model and size tell you exactly what product this label describes.

- ▶ What you might pay to run the appliance for one year, based on its electricity use and the national average cost of energy. The cost appears on labels for all models and brands so you can compare energy use.

- ▶ If you see the Energy Star logo, it means the product is better for the environment because it uses less electricity than standard models.

ENERGYGUIDE LABELS HAVE BEEN AROUND FOR FOUR DECADES and are just as important today to help you buy energy-efficient appliances as they were when they were first introduced. You'll find these useful tags on air conditioners, clothes washers, dishwashers, freezers, furnaces, heat pumps, pool heaters, refrigerators, TVs, water heaters and window AC units.

You'll also often see a second, blue-and-white Energy Star label applied to a much broader range of products that identifies its bearer as being more efficient than most of its peers. For appliances, the standard a product must reach varies. An Energy Star dishwasher, for example, must be 10% more effi-



FILEDENDRON | ISTOCK.COM

Simple Steps for Winter Safety

ELECTRICITY HAS AN IMPORTANT, EVERYDAY ROLE IN OUR LIVES. BUT IT'S EQUALLY important to never get complacent around this powerful force. Keep the following safety tips in mind as winter's chill enters your home.

Space heaters should be used sparingly and safely. Always follow the manufacturer's operating recommendations and keep them several feet away from all flammable objects. Heaters may require occasional cleaning, which can be done by first unplugging the heater and simply vacuuming to remove dust. Do not dismantle the heater for cleaning.

Electric blankets should be checked for damage before use. Look for kinks, worn wires, scorch marks or breaks in the heating element. Remember, electric blankets have a limited life, and if there is any doubt about the safety of yours, replace it.

Don't tangle with tingles. If you receive electric shocks or tingles from an appliance, turn it off, unplug it, do not use it, and discard it or get it checked out immediately.

If a switch or plug plate is warm to the touch or discolored, don't use it. Have it—and your entire home's electric system—checked out by a qualified electrician and make necessary repairs. Flickering lights and buzzing sounds can also indicate issues that need to be addressed.

Smoke and carbon monoxide detectors should be tested and the batteries replaced at least twice a year to make sure they are working properly.

Surge protectors should be used for all valuable electronics. And if the holidays brought additional computers, TVs and other electrical devices into your home, be sure not to overload electrical circuits.

If winter storms bring down power lines, stay far away from them and notify your electric cooperative immediately. Keep others away until help arrives.

Home fires are far more common in winter months due to drier air and other conditions. Exercise extra caution around anything flammable and make sure you have appropriate working fire extinguishers in the kitchen, garage and other areas where fire risk is higher. You should also have an escape plan for your family in the event of a fire.

Winter Weather Safety Is Serious

SNOW AND ICE ARE OFTEN PART OF winter in Texas, and they can lead to downed power lines and outages. Remember the following tips to stay safe and warm should you find yourself in the dark after a winter storm:

Never touch a fallen power line and always assume all wires on the ground are electrically charged. Call your electric cooperative to report it immediately. Avoid contact with overhead lines during cleanup and other activities.

In the event of an outage, use an alternate heating source—such as a fireplace, propane space heater or wood stove.

Fuel- and wood-burning heating sources should be vented. Be sure to follow the manufacturer's directions.

Make sure carbon monoxide detectors and smoke detectors are working properly.

Do not use your oven or stove for heating.

Do not use gas or charcoal grills indoors. Do not use charcoal briquettes in the fireplace.

Pile on the blankets and bundle up to keep your family warm until the power comes back on.

Call 911 immediately if you notice these symptoms: shivering, drowsiness, and signs of mental and physical malaise. The elderly and young children are particularly vulnerable to hypothermia.



PEOPLEIMAGES | ISTOCK.COM



Beachcombing at home.

Texas Co-op Power presents an illustrated *Seashells of Texas* poster by artist Aletha St. Romain, 20x16 inches, suitable for framing.

Order online at TexasCoopPower.com for only \$20 (price includes tax, shipping and handling).

Bonus offer: Get 2 posters shipped to the same address for just \$30.

\$20
or 2 for
\$30

Please allow 4-6 weeks for delivery.

From the publishers of **TEXAS CO-OP POWER**

Give friends and family the Best of Texas.



Texas Co-op Power presents a collection of best-loved recipes from two of our most popular cookbooks ever, the *Typically Texas Cookbook* and *The Second Typically Texas Cookbook*.

This cookbook is filled with more than 700 recipes, including more than 300 dessert recipes.

Order online at TexasCoopPower.com and put *The Best of Typically Texas Cookbook* in your kitchen for only \$29.95 (price includes tax, shipping and handling).

To order by mail, send a check or money order payable to TEC for \$29.95 to Best of Typically Texas Cookbook, 1122 Colorado St., 24th Floor, Austin, TX 78701.

\$29.95

From the publishers of *Texas Co-op Power*

Please allow 4-6 weeks for delivery.

“To you, it’s the **perfect lift chair**.
To me, it’s the **best sleep chair** I’ve ever had.”

— J. Fitzgerald, VA



You can’t always lie down in bed and sleep. Heartburn, cardiac problems, hip or back aches – and dozens of other ailments and worries. Those are the nights you’d give anything for a comfortable chair to sleep in: one that reclines to exactly the right degree, raises your feet and legs just where you want them, supports your head and shoulders properly, and operates at the touch of a button.

Our **Perfect Sleep Chair®** does all that and more. More than a chair or recliner, it’s designed to provide total comfort. **Choose your preferred heat and massage settings, for hours of soothing relaxation.** Reading or watching TV? Our chair’s recline technology allows you to pause the chair in an infinite number of settings. And best of all, it features a powerful lift mechanism that tilts the entire chair forward, making it easy to stand. You’ll

love the other benefits, too. It helps with correct spinal alignment and promotes back pressure relief, to prevent back and muscle pain. The overstuffed, oversized biscuit style back and unique seat design will cradle you in comfort. Generously filled, wide armrests provide enhanced arm support when sitting or reclining. **It even has a battery backup in case of a power outage.**

White glove delivery included in shipping charge. Professionals will deliver the chair to the exact spot in your home where you want it, unpack it, inspect it, test it, position it, and even carry the packaging away! You get your choice of stain and water repellent synthetic DuraLux with the classic leather look or plush microfiber in a variety of colors to fit any decor. **Call now!**

The Perfect Sleep Chair®
1-888-750-7451

Please mention code 109058 when ordering.



REMOTE-CONTROLLED
EASILY SHIFTS FROM FLAT TO
A STAND-ASSIST POSITION



Long Lasting DuraLux



DuraLux II Microfiber



Because each Perfect Sleep Chair is a custom-made bedding product, we can only accept returns on chairs that are damaged or defective.

© 2019 firstSTREET for Boomers and Beyond, Inc.

46524

One Corner of the Square

Historic preservation and economic development are bringing new life to Stephenville's square

BY CLAYTON MAXWELL

IT'S DINNERTIME AT GREER'S RANCH Café on the southeast corner of the Stephenville square, and chef Phil Greer is making the rounds. Backlit by the large front windows that frame the historic Erath County Courthouse across the street, Greer chats with a man inquiring where he bought the horseshoes now used as hooks for the cowboy hats that walk in the door. The waitresses, many of whom attend nearby Tarleton State University, approach him with questions, like they are seeking advice from a favorite uncle.

Greer, who moved here in 2014 to launch this homestyle eatery after 30 years in the food industry in Fort Worth, helms more than a restaurant; he is now a star player in the Stephenville community. As I bite into his No. 1 appetizer—fried deviled eggs—I realize that Greer's Ranch Café is bringing the Stephenville square back to what it once was: the town meeting place, where people shake hands and share news.

It is historical symmetry that Greer's is now the social heart of the Stephenville square. In its first life, the building was W.A. "Billy" Dawson's saloon, built in the early 1890s. Dawson, mustachioed and dressed in a three-piece suit, still presides over the dining room in a large black-and-white photo. After Dawson's death in 1901, the saloon became a restaurant, then a tobacco shop and in the 1950s, a department store. Before Greer's Ranch Café opened, it sat empty for at least five years.

Catty-corner to the old saloon sits the handsome, two-story limestone First National Bank building, which dates to 1889. It and the courthouse that reigns over

the square were designed by renowned Texas architect J. Riely Gordon. With a Rapunzel-style turret and second-story windows filled with light, the former bank is an eye-catcher. When United Cooperative Services member Michele Dunkerley moved to the area after 30 years in Austin's tech industry, she was smitten. She bought the building in 2008 and embarked on a detailed restoration process.

Dunkerley wanted to renovate a historic treasure and also wanted everyone to see the beauty of the square. "I've always thought the square in Stephenville was beautiful—really, truly beautiful," she says. "And I learned that in order to bring people to see it, you need three things: something to eat, something to see and something to do." So then she bought the old Dawson's saloon with the intent to bring it back as a gathering spot.

While Dunkerley was working on these projects, the Texas Legislature established the Texas Historic Preservation Tax Credit Program, which offers a 25% tax credit for costs of restoration to eligible properties. When you add that to the 20% credit from the federal historic tax program, 45% of a project is reimbursed. The state program went into effect in 2015 and helped Dunkerley and her team complete the restoration work that would gain historic designation for both properties.

Following Greer's success, other businesses have taken root on the square. Blue-Eyed Buffalo, a furniture store that opened in 2014, is now thriving, and the Thousand Miles gift and clothing shop opened in 2017 next to Greer's. Also in



Phil Greer and his Greer's Ranch Café helped revitalize the Stephenville square.

an outdoor shop selling high-end gear. They host yoga, fly-fishing and cycling events, and owner Jahmicah Dawes believes it may be the only African American-owned outdoor store in the country.

"We love our town," says Ashleigh Feuerbacher, assistant director of the Stephenville Economic Development Authority who's lived there for 18 years and worked closely with Dunkerley to extend the town's restoration work. "We love our red brick streets, we love who we are, and Greer's has been a catalyst to show

2017, two Tarleton grads transformed the 1890s Rexall Drugstore into Slim Pickins Outfitters,

an outdoor shop selling high-end gear. They host yoga, fly-fishing and cycling events, and owner Jahmicah Dawes believes it may be the only African American-owned outdoor store in the country.

"We love our town," says Ashleigh Feuerbacher, assistant director of the Stephenville Economic Development Authority who's lived there for 18 years and worked closely with Dunkerley to extend the town's restoration work. "We love our red brick streets, we love who we are, and Greer's has been a catalyst to show

ourselves what we can do as a community."

Dunkerley may have kicked the restoration wheels in motion, but the revival of the Stephenville square has been a community collaboration. Kenny Weldon, the mayor of Stephenville from 2012 to 2018, and Metta Collier, vice president of the Collier family's nearby Diamond C Ranch, worked with Dunkerley to access grants from the Texas Parks and Wildlife Department and Texas Department of Transportation to build a walkway around town and along the Bosque River. Feuerbacher worked with preservationist Mary Saltarelli to achieve the listing of Stephenville's downtown district in the National Register of Historic Places in 2018.

"This kind of work is slow; it happens

in inches," says Dunkerley, "but I do it because I love old buildings. They tell stories. There are shared histories. These small Texas towns came to life because of these downtown districts. The life of the town was there at the courthouse square."

But buildings can only tell stories if there are people around to hear them. At dinnertime in Greer's, you'll witness ranchers, grandparents and young families digging into Greer's signature home cooking, catching up on the week's events. With the courthouse as a picturesque backdrop, you can see what happens when one corner of the square brings beautiful old buildings and people back together.

Clayton Maxwell is a travel writer, born and raised in Texas, who lives with her family in Austin.

Four Walls and the Truth

How do we define our possessions, and what do they say about us?

BY RHONDA REINHART

IN THE FALL OF 1998, LYLE LOVETT RELEASED a double album of cover songs written by fellow Texas musicians. The title track, Guy Clark's *Step Inside This House*, was one of my favorites, and I played it on repeat. In the song, Clark's narrator leads a woman—a love interest, presumably—through his house, pointing out treasures and giving brief but poignant explanations of how he acquired each one.

I listened to the song so many times that autumn that I had the man's house memorized, and even though I'd heard the tune a hundred times, I felt the same sting each time Lovett sang about the painting a down-on-his-luck friend had given the homeowner. "It doesn't look like much, I guess/But it's all that's left of him" still gets me.

Back then, I had just graduated from journalism school at Texas A&M University—Lovett's alma mater—and I had no idea where my career would take me. As it turns out, many years later, I would become an editor for one shelter magazine, then another, then a freelance writer focusing on interior design and architecture.

Maybe all those spins of *Step Inside This House* were job training because, somehow, I now make a living listening as people tell me stories about the treasures in their homes. While it's true that no homeowner has given me a quote as forthcoming as the one Clark wrote about a book of poems a young woman gave our dear narrator—"It's funny how I love that book/And I never loved that girl"—the stories I hear often stick with me.

From artworks purchased on trips to far-flung locales to heirloom furnishings passed down through generations, the items that populate people's homes are windows into their personalities, values and histories. They're so personal and intimate that I'm honestly surprised every time someone opens the door to me (a stranger with a tape recorder) and proceeds to release the secrets of his or her belongings.

As die-hard Aggies like to say, "From the outside looking in, you can't understand it." That's true of Texas A&M culture, but it's also true of houses. On the outside, they're a mystery, but once inside those four walls, little—and sometimes big—truths are revealed.

The minimalists among us may argue that material things are a distraction and will never lead to happiness, but I'm not sure about that. When a homeowner on Long Island told me about the 12-foot-long cabinet she dragged out of a barn in pieces, painstakingly refinished and placed in her kitchen, her voice filled with pride. From that short aside, I could tell that the cabinet, once a fixture in a local ice cream parlor, never failed to spark joy.

And when a homeowner in Dallas showed me a series of black-and-white photos she had framed and displayed prominently in her family room, it was clear she cherished each and every one. The images depicted work her grandfather had done for NASA, where he was employed as an engineer. When he retired, NASA gave him the photos, and they were handed down to his granddaughter.



Looking around my house, I realize it's the stacks of books that reveal the most about me. Most of my shelves teem with bulky volumes on architecture and interior design—they're tools of the trade, sure, but they're also glimpses into how other people live. On other shelves in the house, you can trace my reading preferences from elementary school.

Over the years, there was a memoir phase, a true crime phase and a thriller phase. There was also a Stephen King phase that started around 1988 and hasn't ended yet. Some books I keep around for sentimental reasons, such as my 1958 set of Collier's *The Junior Classics*. The 10-volume collection belonged to my mother when she was a girl, and she passed

it on to me. With titles such as *Fairy Tales and Fables*, *Myths and Legends*, and *Stories of Wonder and Magic*, the rainbow-colored hardcovers enthralled this small-town kid whose books were windows to worlds far beyond the city limits of Livingston, Texas. From my most tattered paperback to my heaviest coffee-table tome—and especially that set of children's stories—these books are among my most prized possessions.

When I scan the shelves, I think of Lovett's voice and Clark's words: "I'll show you all the things that I own / My treasures, you might say / It couldn't be more than 10 dollars' worth / That brighten up my day."

Writer **Rhonda Reinhart** covers interior design and architecture.

Quickly Absorbs for FAST Pain Relief

BUY 2 GET 1 FREE

Limited Time Only!

AS LOW AS

\$13.33 EACH

LARGE 4 OZ JAR

90 DAY MONEY BACK GUARANTEE

- ✓ Arnica plus Eucalyptus and Emu Oil for muscle and joint pain
- ✓ Non-greasy formula can be used safely up to four times a day
- ✓ Mild scent disappears after application



Order Now!
MAGNILIFE®

Call Toll Free or Order Online
1-800-516-3481
ArnicaPainGel.com

PO Box 6789, Dept. TC1, McKinney, TX 75071

Name: _____ Phone: _____

Address: _____ City, State, Zip: _____

Email: _____

PAYMENT METHOD

- Check/Money Order enclosed payable to: *MagniLife*
- Charge my credit card



Acct. #: _____

Exp. Date: _____ CVV #: _____ Signature: _____

ARNICA Pain Relief Gel	
<input type="checkbox"/> Buy 2 Get 1 FREE - Only \$13.33 per unit	\$59.97 \$39.98
<input type="checkbox"/> Single unit - \$19.99 per unit	\$19.99
SHIPPING	\$5.95
TOTAL	



Arthritis, Muscle, Joint Pain?

Do you suffer from arthritis, muscle or joint pain, stiffness or swelling? Is an aching neck or back keeping you from your daily activities? Now, you can...

Ease stiffness, inflammation and soreness naturally with the MagniLife Arnica Pain Relief Gel.

1-800-516-3481 / ArnicaPainGel.com

Walgreens



JERRY REICHERT
HOBBY CRAFTERS makes wooden toys as charity donations for children.
POWER OF OUR PEOPLE | DECEMBER 2019

POWER OF OUR PEOPLE

TEXAS CO-OP POWER

\$100 WINNER

Nominate someone today!

Tell us about somebody who improves the quality of life in your community. Email your nomination to people@texascooppower.com. Include the person's name, co-op affiliation and a short description of his or her work in the community. Featured nominees will receive a \$100 donation for their cause.



TEXAS CO-OP POWER GIFT SHOP

Find Texas Treasures Online

Texas food, music, housewares, gifts and more—find it all at TexasCoopPower.com/shop, along with great deals for *Texas Co-op Power* readers.

Just pick and click—it's easy to shop for friends and family without leaving home.

VISIT THE GIFT SHOP TODAY AT

TexasCoopPower.com

MARKETPLACE

BUY • SELL • TRADE • ACROSS TOWN • ACROSS TEXAS

ARK-LA-TEX
SHOP BUILDERS
"WE GOTCHA COVERED"
SHOPS • BARN • CABINS • WWW.SHOPSBUILT.COM
830-730-0515
8670 IH 35 N NEW BRAUNFELS, TX

BUILDINGS OF ALL SIZES
Shops • Garages • Barns • Equipment Sheds • Barndominiums
SHOPS STARTING AT \$10,300

Price includes all labor and materials with 4" steel reinforced concrete slab with moisture barrier, one 10'x10' heavy duty roll up door, one 3 foot steel entry door, concrete aprons, electric stub *Dirt may be extra

WALK IN TUBS FROM \$7995 INSTALLED!

WE INSTALL ACROSS TEXAS!

Bank C.D.'s Due?
CALL US NOW

1-800-359-4940 TEXAS TOLL-FREE
www.mattsonfinancialservices.com

BLAKE MATTSO, CFP™
Signal Securities, Inc., 5400 Bosque, 4th Floor, Waco, TX 76710
Serving Customers All Over Texas

All C.D.'s are insured to \$250,000 per institution by the F.D.I.C. All C.D.'s are subject to availability. Securities offered thru Signal Securities, Inc., Member FINRA/SIPC 700 Throckmorton, Ft. Worth, TX 76102. (817) 877-4256.

BEST BUY WALK-IN TUBS
FEATURING "SEALTITE" TECHNOLOGY

CALL US, DON'T WAIT ANOTHER DAY.
Our products have been made in Texas since 2006. We customize, so why pay for something you don't want? Get exactly what you want at an affordable price. So stop struggling and start enjoying your bath again. Call us for an in-home no-pressure presentation. What do you have to lose?
Visit our showroom at 3411 E. Hwy. 377 in Granbury.

888-825-2362 www.bestbuywalkintubs.com

RHINO®
STEEL BUILDING SYSTEMS

25 Year Warranty • Easy Bolt-Together Design
Engineered Stamp Blueprints

Farm • Industrial • Commercial
RHINO.BUILDERS/TX 940-304-8068
INFO@RHINOBLDGM.COM

Steel Mobile Home Roofing

Leaks? High energy bill? Roof rumble?

YOU NEED → **MOBILE HOME ROOF OVER SYSTEMS**

Since 1983

PERMA-ROOF®
from Southern Builders

Contact us at **800.633.8969** or roofover.com

WE BUY MINERALS

We pay cash for producing or non-producing mineral interests.
CALL US TODAY! 1-888-735-5337

BRUSH SHARK

SKID STEER MOUNTED SHEAR
• 1/2" to 6" diameter trees and brush.
• Perfect for cedar, shin oak, persimmon, mesquite.
(512) 263-6830 • www.brushshark.com

Ghost Dogs of Orozimbo

The tale of a trio of dogs ‘guarding’ Santa Anna continues long past turning point in history

BY MARTHA DEERINGER

OROZIMBO PLANTATION, A SPRAWLING cotton farm in west central Brazoria County, was home to Dr. James Aeneas Phelps and his wife, who both arrived in Texas with Stephen F. Austin’s original colonists in 1822. In 1836, their mansion would serve as a prison for Antonio López de Santa Anna.

Phelps had served as a surgeon for the Texian Army at San Jacinto and observed the capture of Santa Anna, whose ruthless executions of Texians at the Alamo and Goliad prompted demands for the Mexican general’s death. But Sam Houston recognized that the notorious prisoner was worth more to Texas alive, so Santa Anna was taken to Orozimbo, where Phelps managed his care after an attempted suicide.

One wintry night, an officer of the Mexican military organized a group of riders to free Santa Anna. Everyone at the plantation was asleep, except the general, who had ostensibly received word of the plan. Just before dawn, as the riders approached the plantation, a frantic baying of hounds disrupted the early morning silence and roused the guards. The riders withdrew, abandoning the rescue.

But Orozimbo Plantation kept no dogs, and for miles around, there were no neighbors who had dogs. A servant had purportedly seen the creatures and described them as strange, wild-looking animals with frightening eyes. There were three of them, all a dingy white. Two had shaggy coats and one appeared hairless.

Months later, a passing traveler was



told the description of the canines and claimed that the dogs had been the much-loved companions of a man who lived near Washington-on-the-Brazos. When the dogs’ owner left to join the fight for independence, his dogs refused to eat or return to the house. When the animals disappeared, neighbors told the story that they were looking for their master, who had been killed at Goliad.

For the next decade, settlers occasionally spotted the dogs in the forest near Orozimbo. Except for the night of Santa Anna’s attempted escape, they were always silent. The legend of the ghost dogs and their desperate search for their master added an aura of mystery to the story of Santa Anna’s imprisonment.

Residents of West Columbia caught

glimpses of the dogs as they wandered silently in the woods near Orozimbo. Three ghostly dogs fitting the same description reportedly were seen by a man and his wife as recently as 1974 near the cemetery and ancient oak tree that are the last remnants of the fabled plantation.

Nearly 150 years after the event, Catherine Munson Foster wrote of the canine apparitions in the spring 1984 edition of *Texas Heritage* magazine. “There are those who believe, or say they believe, that the ghost dogs of Orozimbo are the same animals still standing guard, alert to give the alarm should the specter of a long-dead Santa Anna make another attempt to escape.”

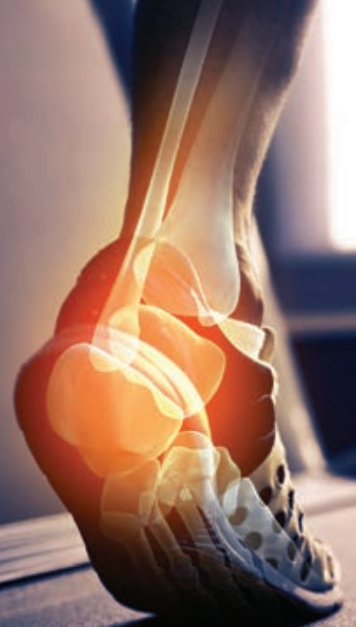
Read more of Martha Deeringer’s writing at marthadeeringer.com.

gravity defyer®

MEDICAL TECHNOLOGY CORPORATION

LIVE LIFE WITHOUT PAIN

Plantar Fasciitis • Arthritis • Joint Pain • Heel Spurs • Back & Knee Pain

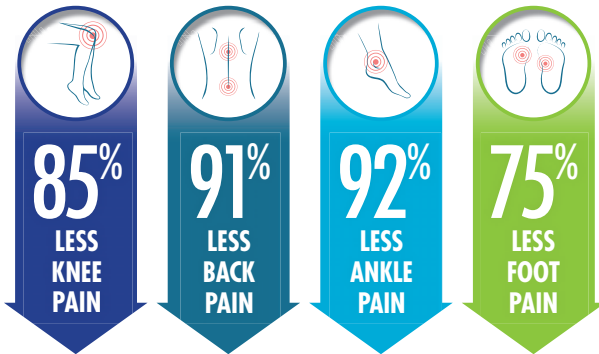


PATENTED VERSOSHOCK® SOLE
SHOCK ABSORPTION SYSTEM

“ I’ve had lower back pain for years. Walking in these shoes was life changing for me. I feel like I’m walking on air. ”

– Bill F.

Enjoy the benefits of exercise
with proven pain relief.



- ✓ Ultimate Comfort
- ✓ Renewed Energy
- ✓ Maximum Protection
- ✓ Improve Posture

*Results of a double-blind study conducted by Olive View UCLA Medical Center.

G-DEFY ION \$155

X-WIDE WIDTH AVAILABLE

Men Sizes 7.5-15 M/W/XW

- Black TB9025MBB
- Red/Gray TB9022MRG

Women Sizes 6-11 M/W/XW

- Black/Blue TB9022FTL
- Gray/Teal TB9022FGU



\$30 OFF YOUR ORDER

Promo Code MQ8AMJ5
www.gravitydefyer.com

Expires April 30, 2020

Free Exchanges • Free Returns
100% Satisfaction Guaranteed

Call 1(800) 429-0039

Gravity Defyer Corp.

10643 Glenoaks Blvd. Pacoima, CA 91331



VersoShock® U.S Patent #US8,555,526 B2. This product has not been evaluated by the FDA. Not intended to treat, cure or prevent any disease. \$30 off applies to orders of \$100 or more for a limited time. Cannot be combined with other offers. 9% CA sales tax applies to orders in California. Shoes must be returned within 30 days in like-new condition for full refund or exchange. Credit card authorization required. See website for complete details.

New Year's Resolution

A NEW YEAR BRINGS PROMISES FROM most of our lips to make healthier choices. Food is an obvious place to start, and it can be an easy place, too, if you make just a few small changes. One of those can be simply adding more fresh vegetables to every meal.

Megan Myers, a Texas foodie who will take over as *Texas Co-op Power* food editor next month, writes Stetted (stetted.com), a food blog. "I focus on fresh ingredients and uncomplicated flavors, with spins that keep mealtime interesting," Myers says. "Real food is possible, even for busy moms like me."

For her, learning to cook healthier meals "was the evolution of figuring out the best flavors from the ingredients we have here in Texas. I also want to make sure my kids are experiencing a wide range of foods, and cooking healthier at home helps balance out those post-soccer and party meals."

Myers' Roasted Sweet Potato Salad With Chickpeas and Kale, served warm, makes a light, healthy meal or a flavorful side for a lean protein. Her Spicy Glazed Brussels Sprouts are another great way to add more fresh winter vegetables to your diet.

SHANNON OELRICH, FOOD EDITOR

Roasted Sweet Potato Salad With Chickpeas and Kale

- 2 medium sweet potatoes, diced
- 2 tablespoons plus 1 teaspoon olive oil, divided use
- $\frac{1}{4}$ teaspoon salt, divided use
- $\frac{1}{8}$ teaspoon paprika
- 1 can (15 ounces) chickpeas
- 2 cups packed torn kale
- 2 tablespoons minced red onion
- 2 teaspoons Champagne vinegar or white wine vinegar

CONTINUED ON PAGE 32



MEGAN MYERS

Recipes

New Year's Resolutions



THIS MONTH'S RECIPE CONTEST WINNER

HALEY FEUERBACHER | COSERV

Spiralized noodles have been all the rage lately. If you haven't tried them, you can use this month's winning recipe as a great starting point. If you already use them, you can add this recipe to your repertoire. Easy and quick, this veggie noodle bowl is great for a healthy weeknight meal and especially satisfying when topped with your choice of protein.

Quick & Healthy Garlic-Parmesan Veggie Noodle Bowl

- 2 tablespoons olive oil, divided use
- 1 white onion, diced
- 2 packages (10.7 ounces each) spiralized butternut squash noodles
- 2 cloves garlic, minced
- 1–2 teaspoons salt, divided use
- 1½–2 cups chopped kale
- ¼ cup chopped fresh basil
- ½ cup freshly grated Parmesan cheese

1. In an extra-large nonstick pan or wok, heat 1 tablespoon oil over medium-high heat. Cook the diced onion in oil until it starts to brown.
2. Add noodles, garlic, ½ teaspoon salt

and remainder of olive oil. Cook, stirring occasionally, for approximately 6 minutes or until noodles are thoroughly cooked. The texture should be soft with some crispy browned noodles.

3. In the last 2–3 minutes of cooking, add kale, basil and another ½ teaspoon salt, stirring thoroughly for even cooking. Taste for seasoning and add more salt if desired.

4. Once the noodles are thoroughly sautéed, remove pan from heat and stir in Parmesan.

► Serves 4.

COOK'S TIP You can make your own butternut squash noodles by using a spiralizer.

CONTINUED FROM PAGE 31

- 2 teaspoons lemon juice
- 1 teaspoon coarse mustard
- 1 teaspoon honey
- ¼ teaspoon ground black pepper

1. Preheat oven to 400 degrees.
2. Toss diced sweet potatoes in 1 teaspoon olive oil, then spread on a rimmed baking sheet. Sprinkle with ¼ teaspoon salt and paprika. Roast 18 minutes, stirring halfway through.
3. Meanwhile, pour chickpeas into a colander over the sink and let drain. Put the kale into a large bowl and set aside.
4. In a small saucepan, combine red onion, vinegar, lemon juice, mustard, honey, black pepper and remaining ¼ teaspoon salt, and heat over low. Once warmed, slowly whisk in remaining olive oil until dressing is emulsified. Keep over very low heat until potatoes are done.
5. Pour cooked potatoes on top of kale, then add drained chickpeas. Whisk dressing one more time, then pour over the chickpeas.
6. Stir salad to coat evenly, taking care to not mash the potatoes. Serve once the kale has softened a bit. ► Serves 2–4.

Spicy Glazed Brussels Sprouts

- 1 pound Brussels sprouts
- 2 tablespoons olive oil
- 2 tablespoons gochujang (red chile paste)
- 1 tablespoon honey
- 2 teaspoons soy sauce

1. Preheat oven to 375 degrees. Trim ends from Brussels sprouts and halve or quarter.
 2. Toss Brussels sprouts with olive oil and spread on a baking sheet. Roast 20 minutes, stirring halfway through.
 3. In a small bowl, whisk together gochujang, honey and soy sauce. Pour over roasted sprouts and stir to coat. Return pan to the oven 5 more minutes, until sauce is sticky and caramelized.
- Serves 4.

COOK'S TIP You can find gochujang in the Asian foods section of most grocery stores, and it can be easily ordered online.



IF YOUR RECIPE IS FEATURED,
YOU'LL WIN A TCP APRON!

\$100 Recipe Contest

June's recipe contest topic is **Texas Wine Harvest**. Send us your best pairings or dishes cooked with wine. The deadline is **January 10**.

ENTER ONLINE at TexasCoopPower.com/contests; MAIL to 1122 Colorado St., 24th Floor, Austin, TX 78701; FAX to (512) 763-3401. Include your name, address and phone number, plus your co-op and the name of the contest you are entering.

My Favorite Carrot Soup

MOIRA CAHILL | CENTRAL TEXAS EC

- 3-4 tablespoons olive oil
- 1 large onion, chopped
- 3 pounds carrots, peeled and chopped
- 3 cloves garlic, minced
- 7 cups chicken or vegetable stock, divided use
- ½ teaspoon dried thyme
- Salt and pepper, to taste
- Greek yogurt (optional)

1. Heat olive oil in a stockpot over medium heat. Add onion and cook until soft. Add carrots and cook another 5 minutes. Add garlic and cook 1 minute.
2. Add 6 cups of stock and the thyme, salt and pepper and bring to a boil. Reduce heat and simmer 20 minutes or until carrots are soft.
3. Purée the soup in a blender. Add additional stock for desired consistency. Simmer an additional 30 minutes. Serve hot with a dollop of Greek yogurt.

► Serves 8-10.



Top Tips for a Healthy New Year

Resolve to make small changes, which are easier to maintain than sweeping changes. For example, if you're not already a runner, don't sign up for a marathon, but do resolve to go for a walk three times a week.

It's easier to add things than take them away. Want to make your diet healthier? Resolve to have at least two types of vegetables at lunch and dinner.

Reward yourself for progress. If you get to the end of January and have kept

your resolution 90% of the time, make your reward something related to it. Healthier diet? Get yourself a cool new piece of cooking equipment. Went on more walks? Buy new athletic shoes.

Don't beat yourself up if you stumble. If you break your resolution, try to start it again as soon as you can. If you slip up on a weekend, start again on Monday. If your blunder is midweek, use the weekend as your reset.

SHANNON OELRICH

TEXAS COOP POWER

NEXT MONTH

A TALE OF TEXAS CRAWFISH

Tasty crustaceans create a feasting frenzy every spring.

CRABE MURDER As healthy trees are hacked in the prime of their lives, an expert pleads: Stop the madness.

Look for additional content online
TexasCoopPower.com



LOW COST Mobile Home Insurance

Covered with a national carrier?

Get your **Declaration Page** & call to compare!

Start Saving *Today!*



- Replacement Cost for Most Homes
- 96% Claims Satisfaction
- Escrow Billing, Payment Plans, Customer Portal and Online Payments

www.stdins.com

CALL NOW

800-522-0146



Serving
Texas Mobile
Homeowners
since 1961





Thermal Knee Warmers Make Your Knees Feel
20 Years Younger!

BUY 1 pair GET 2nd pair FREE



Snug
Non-Binding
Fit



**SOOTHING
THERAPY**
For Aching Knees!

Perfect For
**ARTHRITIS
SUFFERERS**

Experience quick pain relief from stiff, achy, arthritic knee joints. Cozy, soft therapeutic knee warmers caress your legs in warmth & comfort at home or away. Gently elasticized for a snug non-binding comfortable fit, perfect under slacks or over hosiery. Import made of soft, washable 100% acrylic knit. One size fits most.

**SAVE Over
50%**
off catalog price



Relieve Aching
Knee Joints with
Therapeutic Warmth

Dept 79044 © Dream Products, Inc. (Prices valid for 1yr.)

THERMAL KNEE WARMERS		<input type="checkbox"/> VISA <input type="checkbox"/> MasterCard <input type="checkbox"/> Discover®/NOVUS SM Cards Card# _____ Exp. Date ____/____	
Item #96870		_____	
_____ Thermal Knee Warmers @ \$7.99 pr. Buy 1 Pair, Get 2nd Pair FREE	\$ _____	_____	
CA residents must add 7.25% sales tax	\$ _____	Name _____	
Regular Shipping & Handling Add \$4.95 (no matter how many you order!)	\$ 4.95	Address _____	
<input checked="" type="checkbox"/> FOR EXPEDITED SHIPPING (optional) Add An Additional \$2.95 (receive your order 5-7 days from shipment)	\$ 2.95	City _____ ST ____ Zip _____	
Please Print Clearly	TOTAL \$ _____	Daytime Phone # _____	
Check or money order payable to: Dream Products, Inc. Send Order To: 412 Dream Lane, Van Nuys, CA 91496		Dept. 79044 Email _____	

Receive A Free Surprise Gift with every order

1-800-530-2689

Order Now Toll-Free

Connect With
DreamProducts.com
website offers may vary

Satisfaction Guaranteed or Return For Your Money Back

Fences

WHETHER YOU'RE BUSY SWINGING for the fences or mending them, one thing's for sure—the grass is greener on the Texas side. **GRACE FULTZ**

WEB EXTRAS ▶ See Focus on Texas on our website for more photos from readers.

◀ **JESSIKA MORRIS**, Navasota Valley EC: "This photo was captured while my daughter Dixie was leaning over a barbed wire fence so that she could get to know one of the newest horses on the farm."

▼ **TRAVIS LACOSS**, Pedernales EC: The Rita Blanca National Grasslands in the Panhandle.



▼ **ASHLEY ZIMMERMAN**, Trinity Valley EC: "I go for many walks on our property and I always take my camera. This bobcat came out to pose for me one lucky afternoon."

▶ **TERRI CARTER**, Rita Blanca EC: "The sunrise colors are really multiplied by the ice that coated this fence. It melted some and slid down a bit, then it froze again."



◀ **RICK ROBERSON**, United Cooperative Services: "The setting summer sun in Big Bend casts its warm glow on this old gate that, in spite of some hard knocks, is still getting the job done."

UPCOMING CONTESTS

MAY FAIRS AND CARNIVALS	DUE JANUARY 10
JUNE STATE PARKS	DUE FEBRUARY 10
JULY EXPLORATION	DUE MARCH 10

Enter online at TexasCoopPower.com/Contests.



Pick of the Month
Hill Country Gem & Mineral Show

Fredericksburg January 18-19
 (325) 248-1067, fredericksburgrockhounds.org

This annual show by the Fredericksburg Rockhounds, at Lady Bird Johnson Municipal Park, features dealers, demonstrations, rock cutting and activities for children. The Rockhounds' monthly meetings include rock swaps and field trips for rock hunting and to museums.

January

11
Kerrville Out of This World: Music of the Cosmos, (830) 792-7469, symphonyofthehills.org

San Angelo Family Day Mystery at the Museum, (325) 653-3333, samfa.org

16
Corsicana Reflections of Patsy Cline, (903) 874-7792, corsicanapalace.com

Tyler An Evening With Rita Moreno, Legend of Stage and Screen; (903) 566-7424; cowancenter.org

17
Lubbock [17-18] Symphony Masterworks Series: Grieg's Beloved Piano Concerto, (806) 762-1688, visitlubbock.org

18
Brenham Uptown Swirl in Downtown Brenham, (979) 337-7582, downtownbrenham.com
Luckenbach Blues Festival, (830) 997-3224, luckenbachtexas.com

Surfside Beach Dunes Day, (979) 864-1152, brazosport.org

21
Lufkin Ladysmith Black Mambazo, (936) 633-5454, angelinaarts.org

23
Richardson Todd Mosby and the New Horizons Ensemble, (972) 744-4650, eisemanncenter.com



January 24-25
 Jefferson
 Quilt Show

MINERAL: SEBASTIAN JANICKI | SHUTTERSTOCK.COM. QUILT: MPITZER | SHUTTERSTOCK.COM. WINTER CARNIVAL: EVGENY BAKHAREV | SHUTTERSTOCK.COM



HILL COUNTRY ANTIQUE TRACTOR AND ENGINE CLUB
FREDERICKSBURG, TEXAS

TRACTOR AND ENGINE SHOW
MAY 16 GILLESPIE COUNTY FAIRGROUNDS
 FREDERICKSBURG, TEXAS

Featuring HWH Sled Modified Tractors and Trucks
 Tractors, Engine Displays, Demos and More | Participants Welcome

rustyiron.net | 830-889-0070
 Facebook: Hill Country Antique Tractor and Engine Club

APRIL 18
 Bluebonnet
 Tractor Ride

NEW

OCTOBER 10
 Fall Foliage
 Tractor Ride

AROUND TEXAS
EVENT CALENDAR

Gas Up and Go!

Fairs, festivals, food and family fun! It's all listed under the Events tab on our website.

Pick your region. Pick your month. Pick your event. With hundreds of events throughout Texas listed every month, TexasCoopPower.com has something for everyone.

PLAN YOUR TRIP TODAY AT
TexasCoopPower.com

24

Marshall Farewell Angelina, (903) 934-7992, memorialcityhall.com

Jefferson [24-25] Quilt Show, (903) 935-2235, jeffersonquiltshow.com

New Braunfels [24-25] Patty Griffin, (830) 606-1281, gruenehall.thundertix.com

25

Bandera Grace Lutheran Church Wild Game Dinner, (830) 796-3091, gracebandera.weebly.com

Edna Brackenridge Winter Carnival and Snow Day, (361) 782-5456, brackenridgepark.com

Fredericksburg Hill Country Indian Artifact Show, (830) 626-5561, hillcountryindianartifacts.com

Ozona Permian Basin Square and Round Dance Association Winterfest, (432) 685-3266, squaredancetx.com

30

Boerne Voctave, (830) 331-9079, boerneperformingarts.com

Galveston *We the People*, 1-800-821-1894, thegrand.com



January 25
Edna
Brackenridge Winter
Carnival and Snow Day

31

Canton [31-Feb. 2] Battle on the Mountain, (318) 455-4489, facebook.com/9thtexas canton

February

1

Crockett Asleep at the Wheel, (936) 544-4276, pwfaa.org

San Antonio Asian Festival, (210) 458-2224, texancultures.com

4

College Station Steep Canyon Rangers, (979) 845-1234, mscopas.org

5

Laredo [5-8] Birding Festival, (956) 718-1063, laredobirdingfestival.org

7

Grand Prairie [7-9] *Trolls Live!*, (972) 854-5050, theatregp.com

Ennis [7-8, 14-15, 21-23] *Forever*, (972) 878-5126, theatre rocks.com

Submit Your Event!

We pick events for the magazine directly from TexasCoopPower.com. Submit your event online for March by January 10, and it just might be featured in this calendar.

CO-OP NEWS IN YOUR INBOX SIGN UP TODAY

TCP E-newsletter

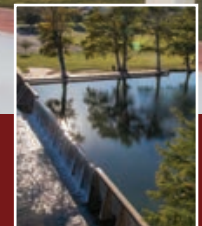
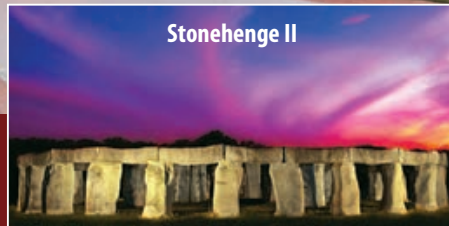
Get news from your co-op, plus links to our best content delivered to your inbox each month! Feature stories, recipe and photo contest winners—get it all in the e-newsletter!



SIGN UP TODAY AT
TexasCoopPower.com

Retreat... Relax in Kerrville

The Capital of the Texas Hill Country!



KERRVILLE
CONVENTION & VISITORS BUREAU

KerrvilleTexasCVB.com • 830-792-3535 • One Hour West of San Antonio on IH-10



Must See Sequel

Hill Country Arts Foundation makes Ingram's Stonehenge II accessible

I'VE FOUND THAT THE SEQUEL IS RARELY better than the original. Movies like *Jaws: The Revenge* support this conclusion. But sometimes a second act surpasses the first, and this happened when two Texans used a truckload of plaster to construct Stonehenge II, a monument that's better than the original because it's here in Texas.

On a sweltering summer day, I tripped out to the Texas Hill Country, 5 miles west of Kerrville, to visit Ingram. Most visitors come to splash in the Guadalupe River or to relax on its cypress-lined banks. But I was on a mission to see a Texas version of one of the world's iconic stone structures.

The original Stonehenge, in Wiltshire, England, was built around 2500 B.C. It fascinates Americans, and there are two dozen Stonehenge replicas in the United States. I wanted to know what separates Stonehenge II from the rest.

I followed the Guadalupe and arrived at the Hill Country Arts Foundation. There, in a crunchy field of dry grass, stood 30 interlocking arches encircling five free-standing ones. All were between 8 and 12 feet tall.

My first question was "Why in the world is this here?" The answer begins with Al Shepperd, who received a large limestone slab from his buddy Doug Hill. Rather than use the stone as landscaping, Shepperd dug a hole and stood the slab upright as a monolith. Every day



Chet checks out Stonehenge II in Ingram.

he looked at it and thought, "Wow, that looks like Stonehenge."

Hill agreed, and soon they constructed the first arch out of plaster and chicken wire. It looked so good that they didn't want to stop. Within a few years, the men had built Stonehenge II, and visitors came from all over the world. The hit TV show *Friday Night Lights* even filmed an episode on-site.

Standing near the arches, I was amazed by how much work went into building these incredible structures. Even though it's only 90% as wide as the original Stonehenge and 60% as tall, all the arches are intact. And unlike the original Stonehenge, there are no barriers restricting access. Anyone can walk among the behemoth "stones" and imagine the real Stonehenge when its builders established it millennia ago.

Stonehenge II was originally constructed on Shepperd's property in Hunt. After his death, the family decided to sell the property and feared that the new owners might not appreciate this quirky art.

The Hill Country Arts Foundation purchased the entire installation and moved it to its present location on the river. To make the site even more curious, it also moved Shepperd's replicas of the Easter Island stone heads, which now stand like guardians protecting Stonehenge II.

Stonehenge I and II remain shrouded in mystery. With England's Stonehenge, we wonder how and why the ancient people built it. With Ingram's Stonehenge II, we know the how but could still spend hours pondering why a couple of buddies would dedicate endless hours toward this project.

It may seem complicated, but for those of us who've spent enough time in Texas, we know the reason. It's simply the Texas heat, which can make our brains do some mighty crazy things. And that's enough explanation for me.

Chet Garner shares his Texplorations as the host of *The Daytripper* on PBS.

 **WEB EXTRAS** ▶ Read this story on our website to see Chet's video of his visit to Stonehenge II in Ingram.

CELEBRATING

90

YEARS

MADE FOR LASTING

performance



Let Mueller create a custom steel building that will serve your needs for decades to come. Put us to work on a garage, storage building, workshop or combination of all three. All of our buildings are designed and manufactured in the USA, featuring commercial grade steel and limited paint warranties up to 30 years. That means they're built to last – and backed by a company that's been in business for 90 years.

Learn more at: www.muellerinc.com



877-2-MUELLER (877-268-3553)

Save a Bundle on TV and Internet!



2-YEAR TV PRICE LOCK!

\$59⁹⁹
month for TV



Add Internet!
Blazing-Fast Internet
~~\$59⁹⁹~~
month for Internet

\$39⁹⁹
month for Internet

- Speeds from 25Mbps-1 Gbps
- No Matter Where You Live
- Now with Unlimited Data!

It's All Included!

- ✓ Includes 190 Channels with Locals
- ✓ Includes Hopper Smart HD DVR
- ✓ Includes HD Programming
- ✓ Includes One TV, Add More for \$5
- ✓ Includes Voice Remote Requires internet connected Hopper.



FREE Premium Channels After 3 mos. you will be billed \$30/mo unless you call to cancel.

NETFLIX | **- Fully Integrated -**
Just Change The Channel And Watch!
Netflix subscription required.

Save up to \$20/month!*

*Unlimited data refers to no hard data caps. \$ off discount offers vary by service address. Go to godish.com/internet to verify your discount. TV service not required for Internet.

\$200
Get TV. Get \$100. Add Internet. Get \$200.

Visa® Prepaid Card

1234 5678 9012 3456
4000
Gift Card
Expires END 01/25
Valid only in U.S.

Courtesy of GoDISH.com.
Must mention offer code Card200 when you subscribe to both TV and Internet services.

1-866-290-7151
Mon-Fri: 7am-10pm • Sat: 7am-9pm • Sun: 10am-7pm Central Time

godish.com/pricelock 🔍

iSe Habla Español!

dish
Authorized Retailer

*Prices include Hopper Duo for qualifying customers. Hopper, Hopper w/Sling or Hopper 3 \$5/mo. more. Upfront fees may apply based on credit qualification. Fees apply for additional TVs: Hopper \$15/mo., Joey \$5/mo., Super Joey \$10/mo. All offers require credit qualification, 2-Year commitment with early termination fee and eAutoPay. Offer for new and qualifying former customers only. Important Terms and Conditions: Qualification: Upfront activation and/or receiver upgrade fees may apply based on credit qualification. Offer ends 1/13/20. 2-Year Commitment: Early termination fee of \$20/mo. remaining applies if you cancel early. Included in 2-year price guarantee at \$59.99 advertised price: America's Top 120 programming package, local channels, HD service fees, and Hopper Duo for 1 TV. Included in 2-year price guarantee for additional cost: Programming package upgrades (\$69.99 for AT120+, \$79.99 for AT200, \$89.99 for AT250), monthly fees for upgraded or additional receivers (\$5-\$7 per additional TV, receivers with additional functionality may be \$10-\$15). NOT included in 2-year price guarantee or advertised price (and subject to change): Taxes & surcharges, add-on programming (including premium channels), DISH Protect, and transactional fees. Premium Channels: 3 Mos. Free: After 3 mos. you will be billed \$30/mo. for Showtime, STARZ, and DISH Movie Pack unless you call to cancel. Requires credit qualification, 2-year commitment with early termination fee and eAutoPay. Hopper upgrade fee may apply. Gift and Pre-paid Cards: Courtesy of GoDISH.com for credit-qualified customers. Customers who do not qualify may be eligible for a secondary gift offer. Cards are issued by Citibank, N.A. pursuant to a license from Visa® U.S.A. Inc. and managed by Citi Prepaid Services. Cards will not have cash access and can be used everywhere Visa® debit cards are accepted. Cards expire 6 months from date issued. Mail-in redemption form is required within 60 days of qualified activation to receive gift. Customer account must be current and in good standing at the time of redemption. Allow 6-8 weeks for delivery of gift. Other: Netflix streaming membership required. All packages, programming, features, and functionality and all prices and fees not included in price lock are subject to change without notice. After 6 mos., if selected you will be billed \$9.99/mo. for DISH Protect Silver unless you call to cancel. After 2 years, then-current everyday prices for all services apply. For business customers, additional monthly fees may apply. Free standard professional installation only. SHOWTIME is a registered trademark of Showtime Networks Inc., a CBS Company. STARZ and related channels and service marks are property of Starz Entertainment, LLC. Indiana C.P.D Reg. No. - 19-08615 © 2020 GoDISH.com. All rights reserved. Internet speeds, prices, and providers vary by customer address. \$39.99 price refers to 25Mbps plan. Restrictions apply. 25 Mbps internet service available nationwide, but may become temporarily unavailable to certain addresses based on local beam capacity. Availability is subject to change without notice. Internet not provided by DISH and will be billed separately. Call for details.